

CULVER BOULEVARD REALIGNMENT PROJECT LANDSCAPE PRESENTATION

CULVER CITY COUNCIL PRESENTATION

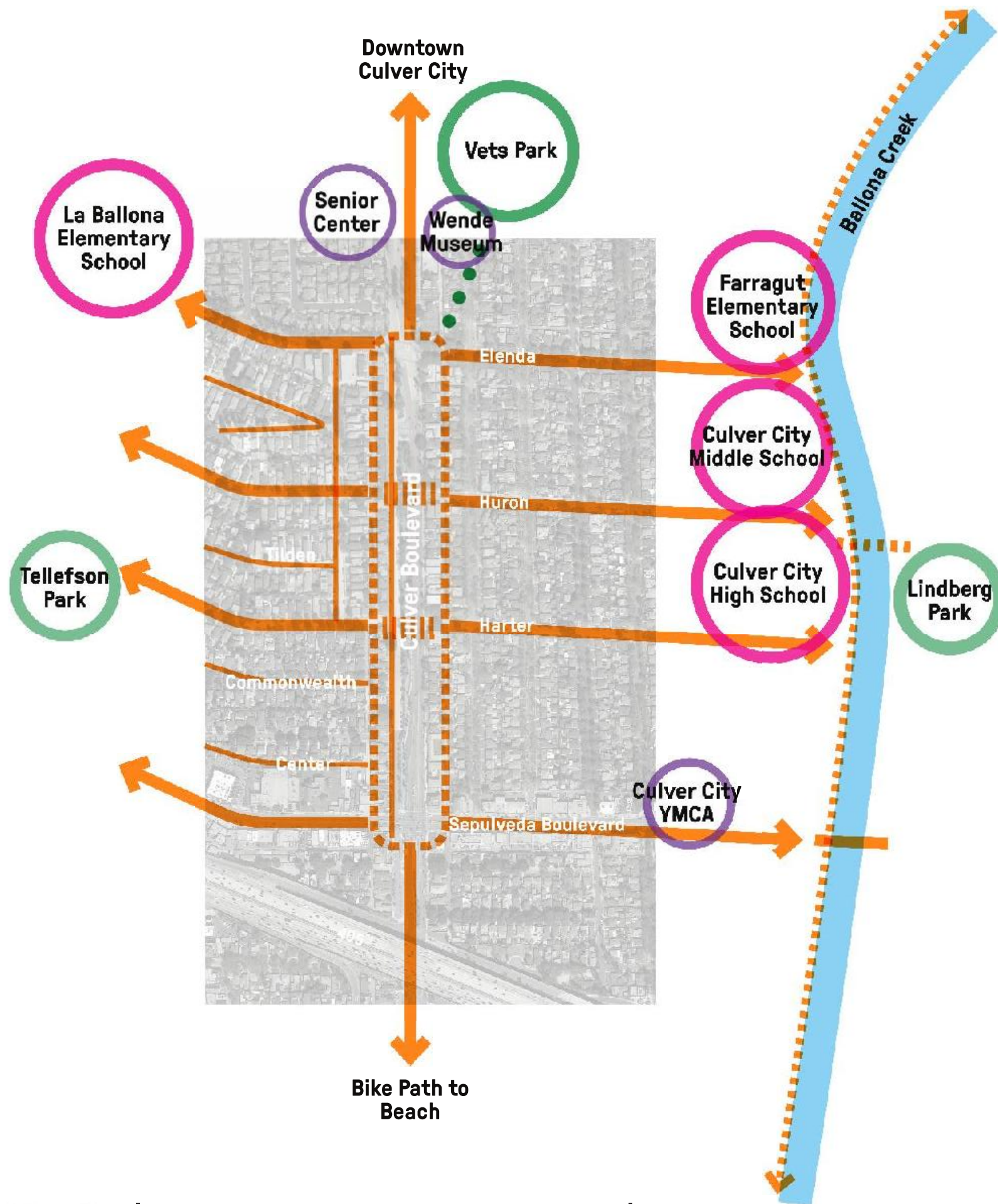
JANUARY 28, 2019

For Today

1. Introduction and Process
2. Our Neighborhood and Community
3. The Culver Boulevard Median
4. The Parts - Enlargements and Sections
5. Question and Answers

swa

TETRA TECH



Our Neighborhood and Community

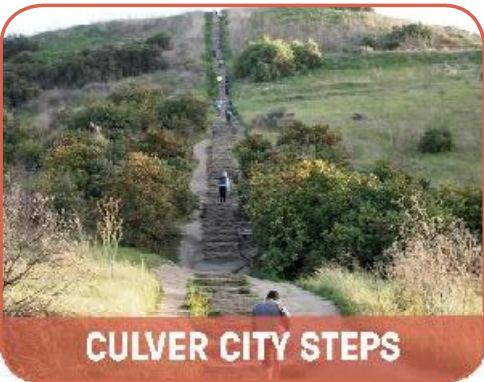
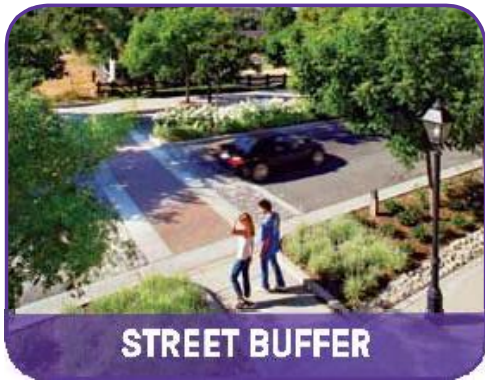
Create a **COMMUNITY CENTERED GREEN SPACE** that prioritizes safety, design that maximizes green space and trees, improves sustainability, and enhances connections within the neighborhood.

Safety
Beautification
Connection
Sustainability

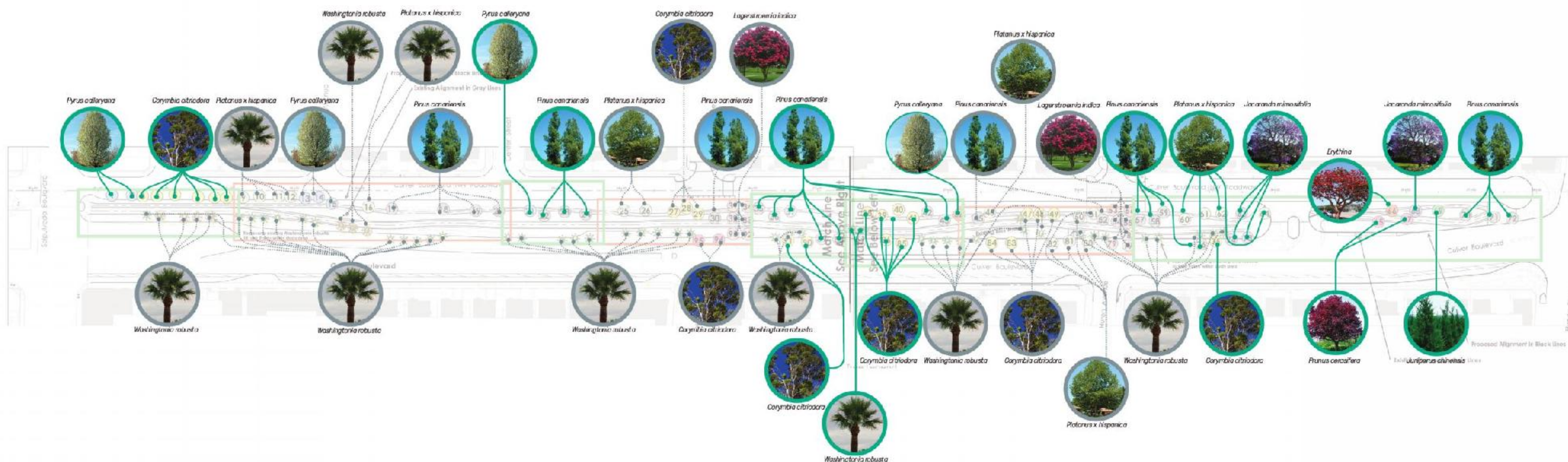
Community



Community Feedback



Keep as Many Trees as Possible



GOALS

- **Keep as many trees as possible**
- **Make a gateway of Culver City**
- **Utilize the Urban Forest Plan**
- **Design a beautiful green corridor**
- **Provide accents of color**
- **Possibly upsize & resize**

Challenges

- **Water Gallery below needs to be excavated**
- **Keeping trees reduces height of Berm**
- **Many trees already in poor condition**
- **Larger trees take longer to adapt**
- **Plant smaller, younger trees**

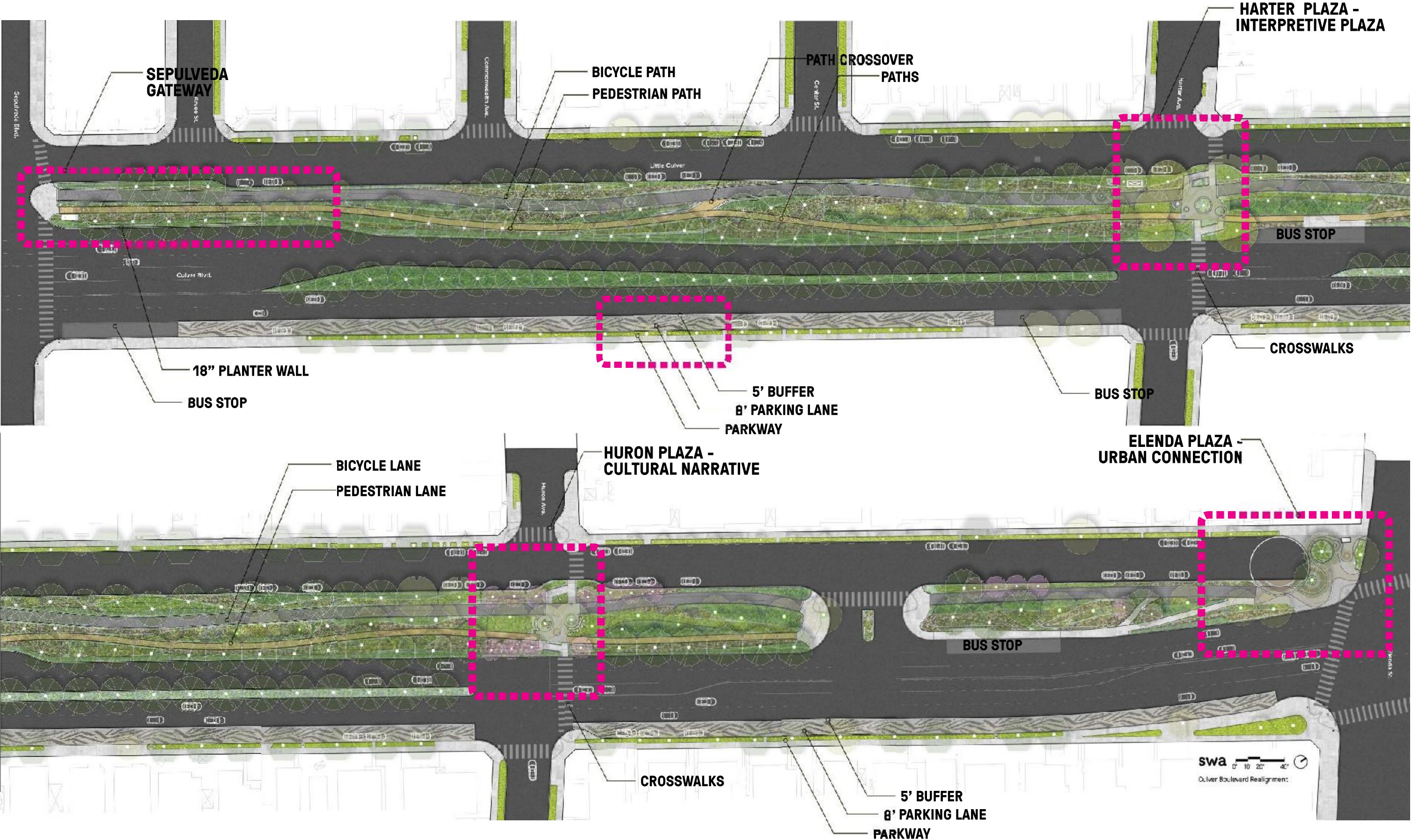
GOOD

- **Healthy**
- **Native / Adaptive**
- **Low water usage**
- **Structurally sound**
- **Provides shade**

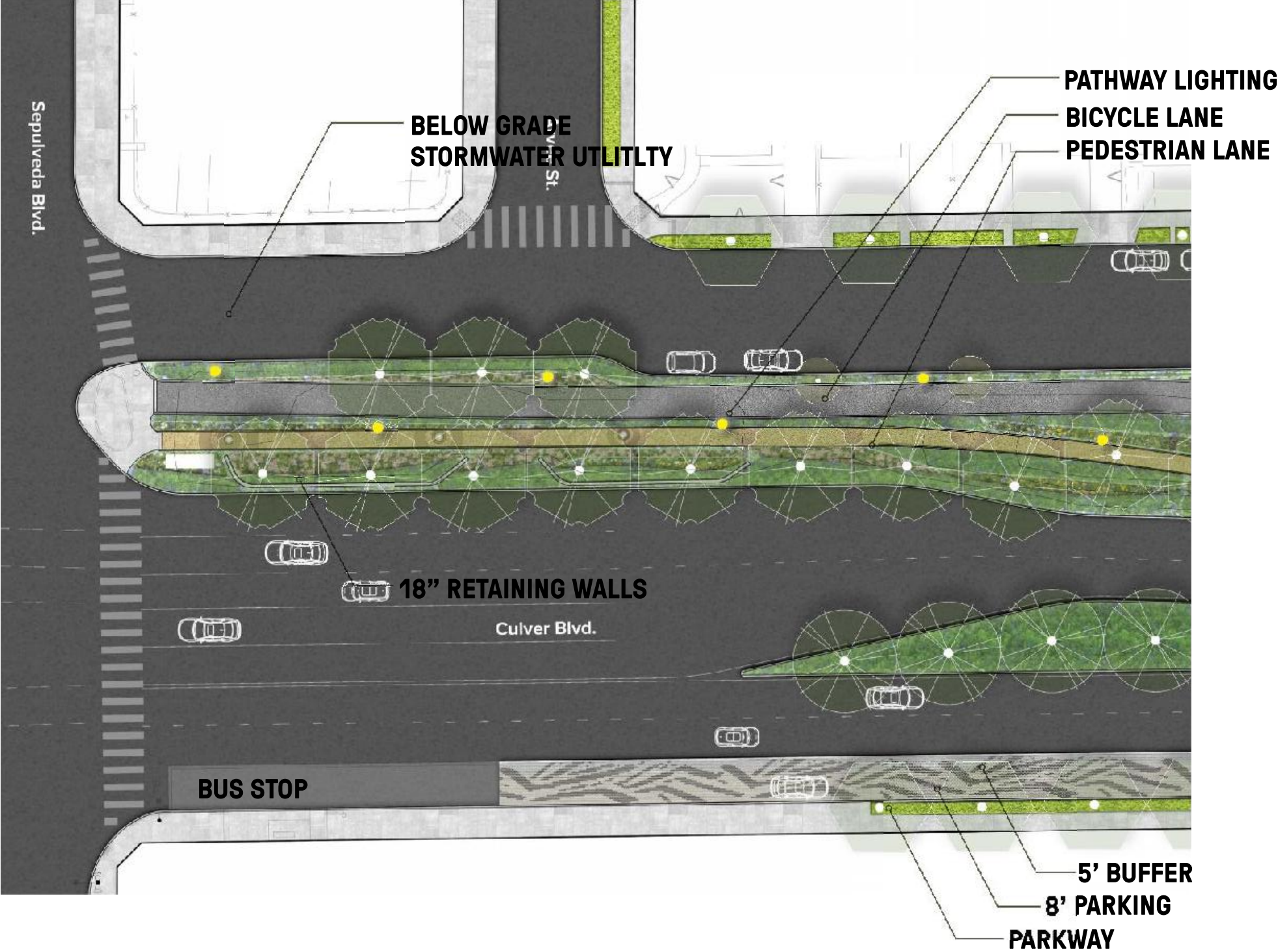
POOR

- **Unhealthy**
- **Non-Native / Invasive**
- **High water usage**
- **Tend to break**
- **Provides little shade**
- **Susceptible to blight**

LANDSCAPE PLAN AND UPDATES



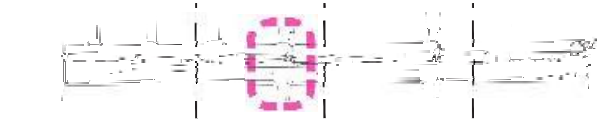
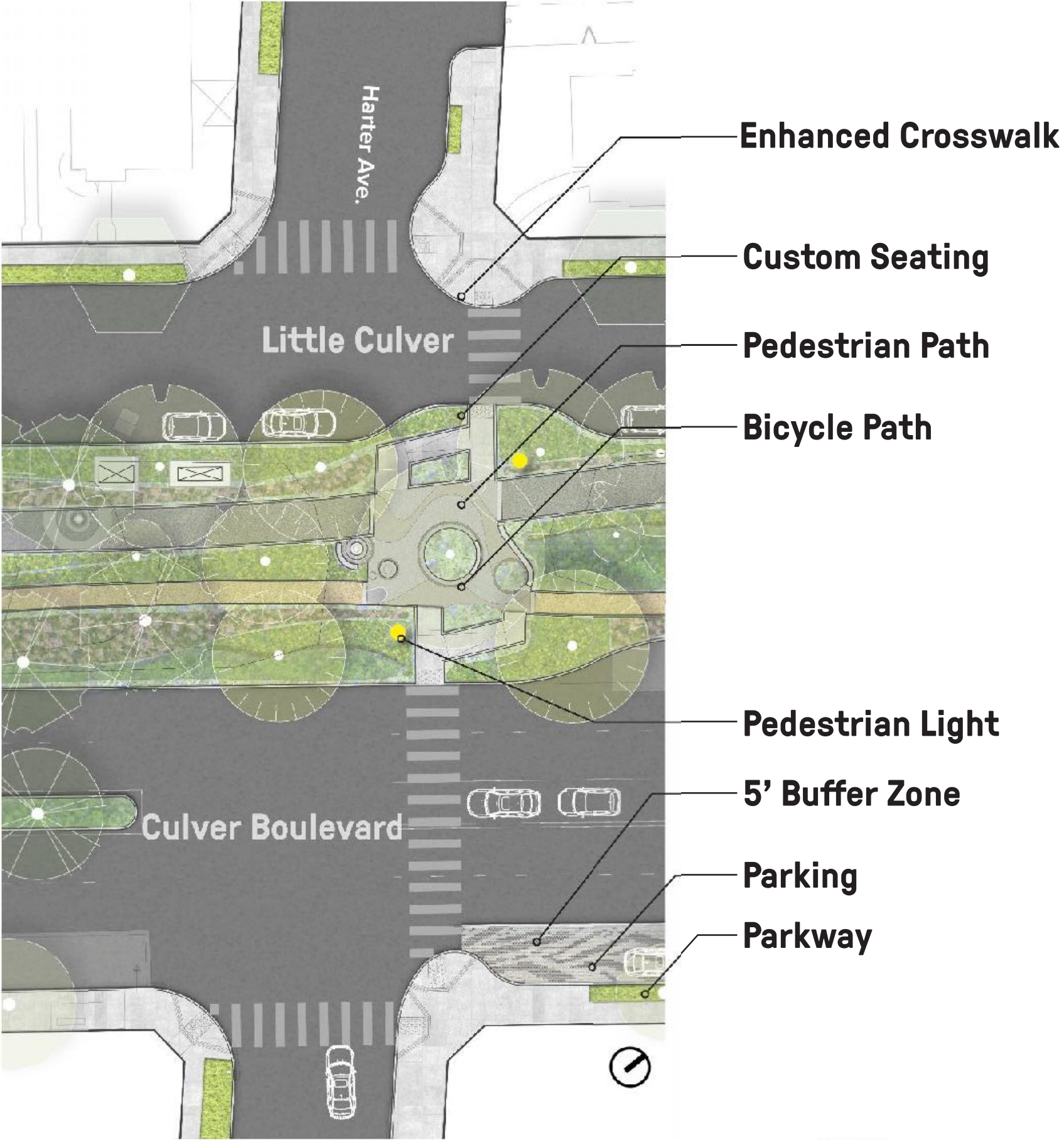
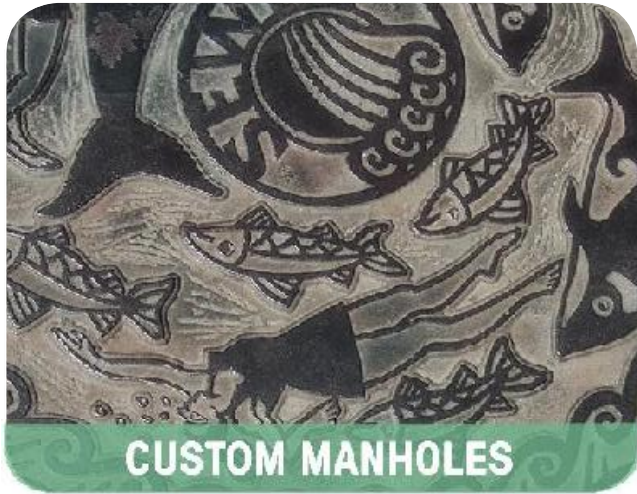
SEPULVEDA GATEWAY



CULVER BOULEVARD MEDIAN AT SEPULVEDA
RETAINING WALL AND BERMING CONCEPT



Enlargement @ Harter - Water Story Plaza





PLAZA MATERIALS



CUSTOM MANHOLE



CENTRAL SIGNATURE TREE



EMBEDDED CULTURAL ELEMENTS



PLAZA PAVING



PLAZA COBBLESTONE

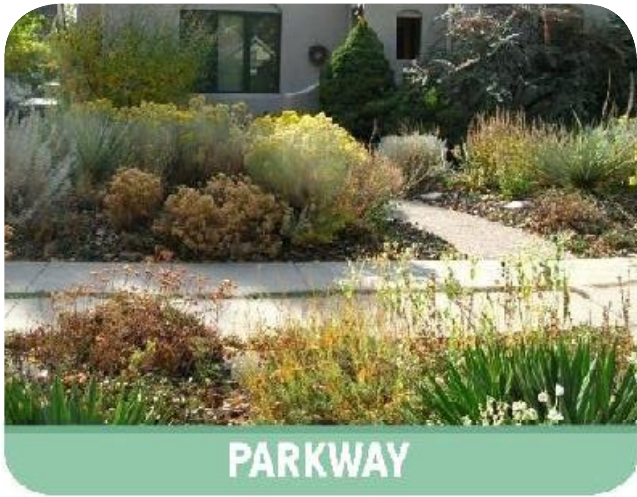


EDUCATIONAL SCREENPRINTING

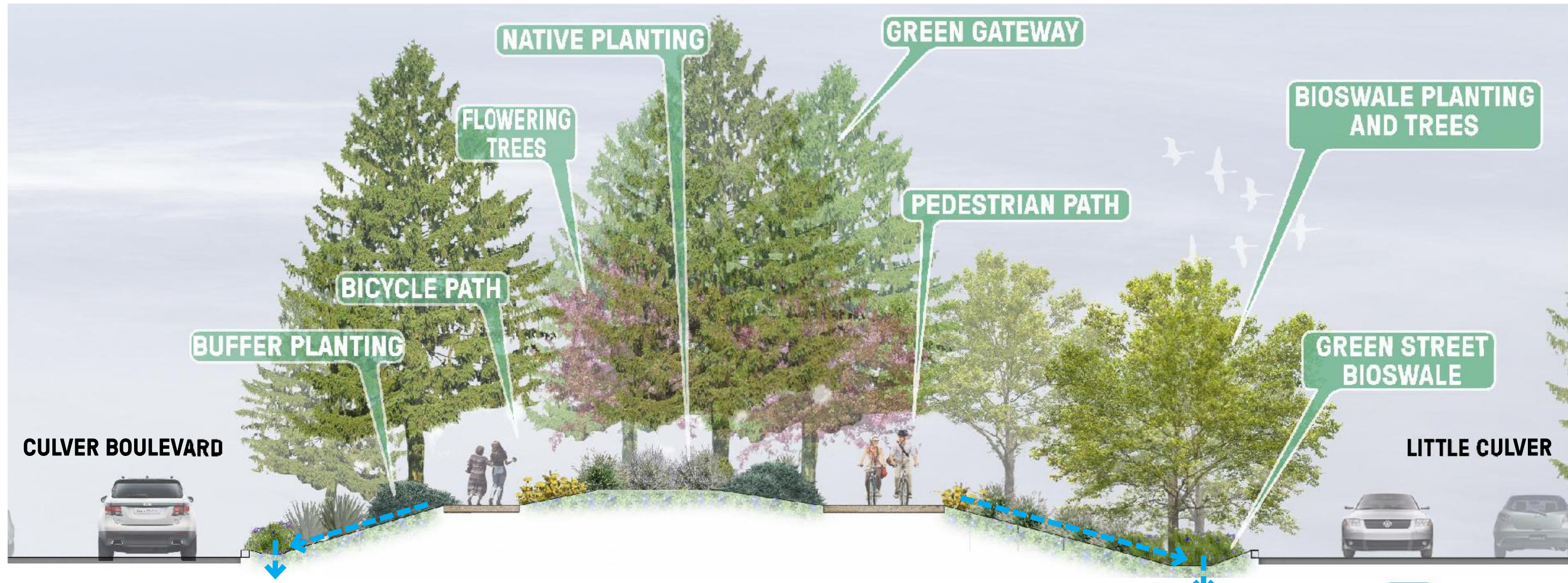


LOW WATER PLANTING

Enlargement @ Center Street



Section @ Center Street



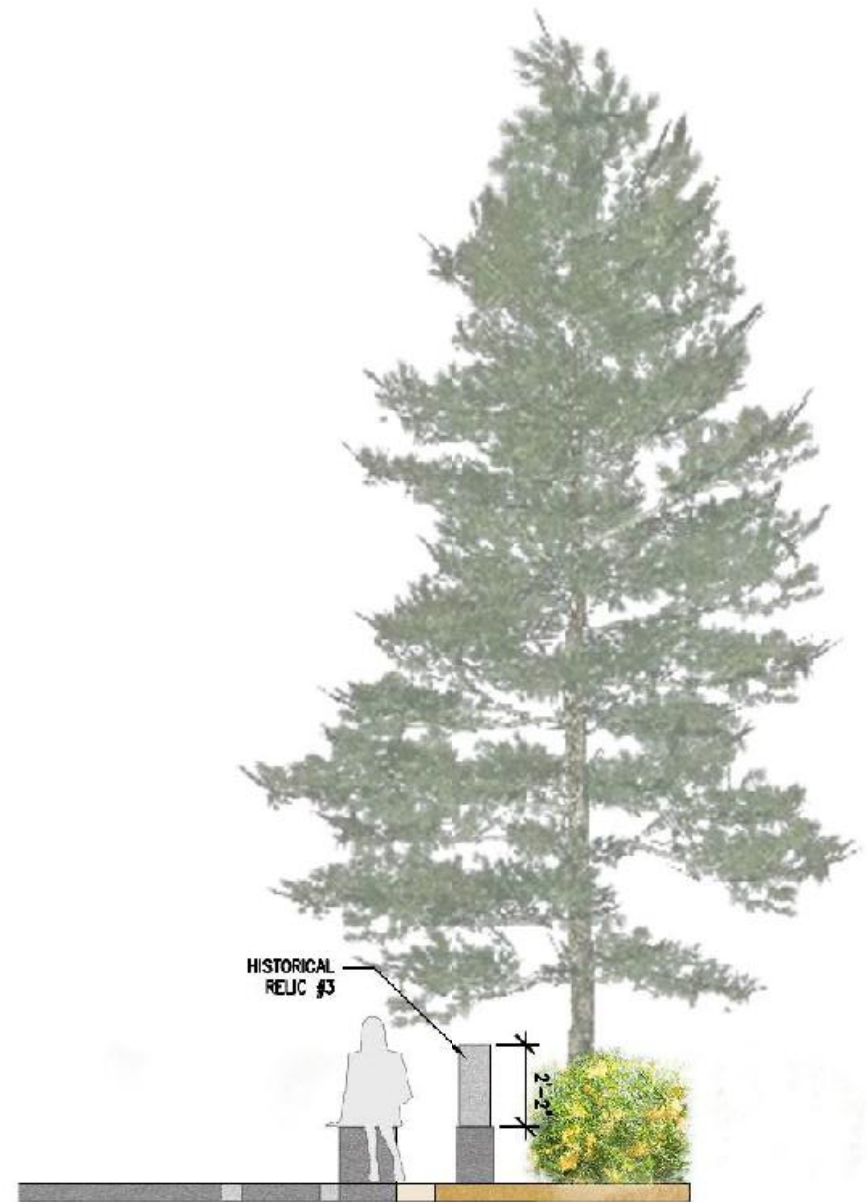
Enlargement @ Huron - Cultural Plaza



HISTORIC RELIC #1 - PLINTH



EXISTING CONDITION

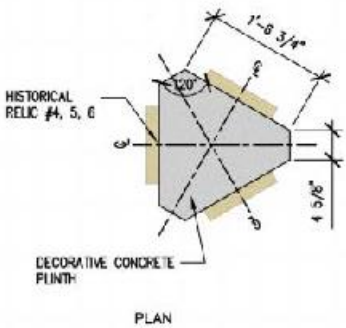


HISTORIC RELIC #3 - SECTION

ELEVATION @ 3/16"



SECTION

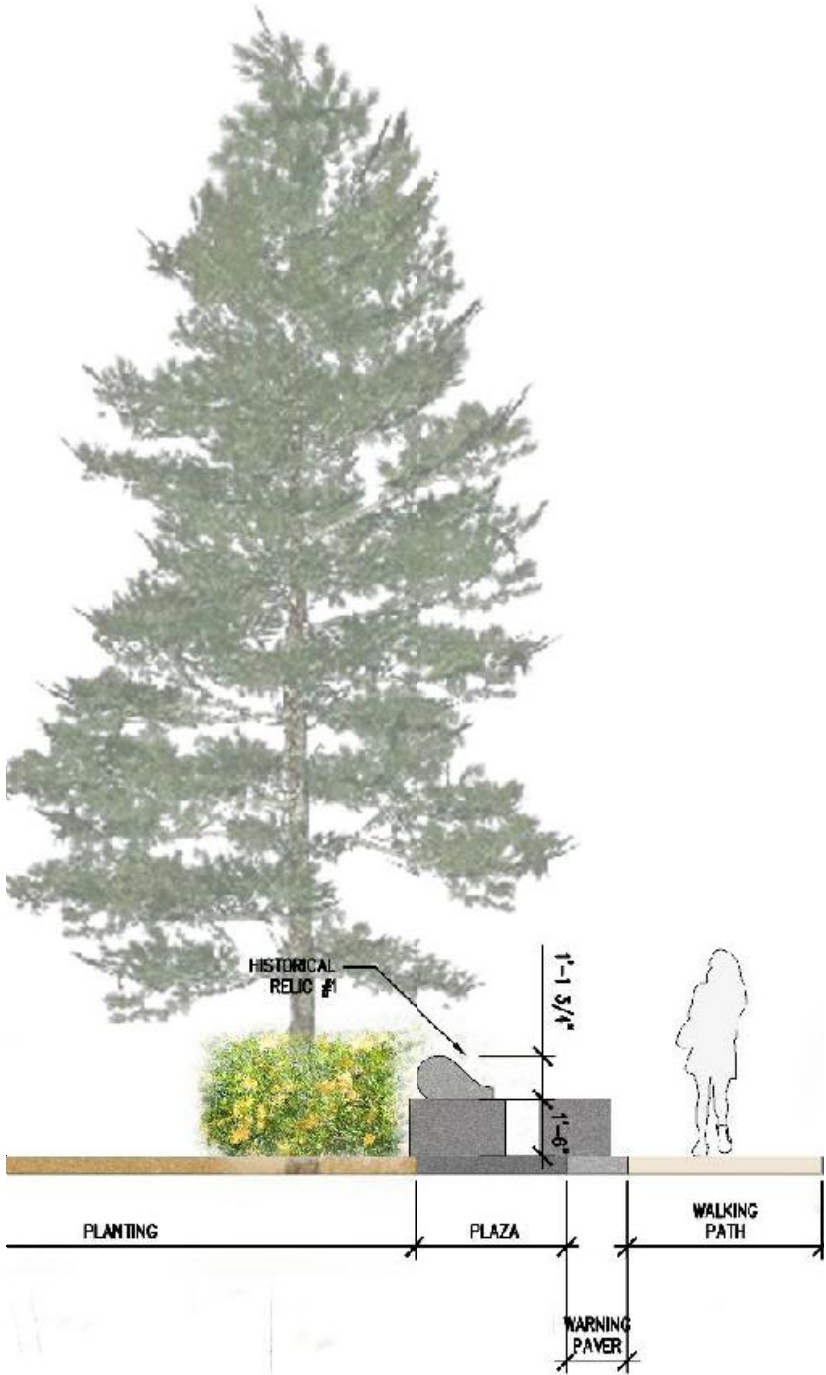


PLAN

HISTORIC RELIC #3 - CORNICE



EXISTING CONDITION



ELEVATION @ 3/16"



SECTION



PLAN

HISTORIC RELICS #2 - CIRCULAR
ELEVATION



ELEVATION @ 3/16"



EXISTING CONDITION

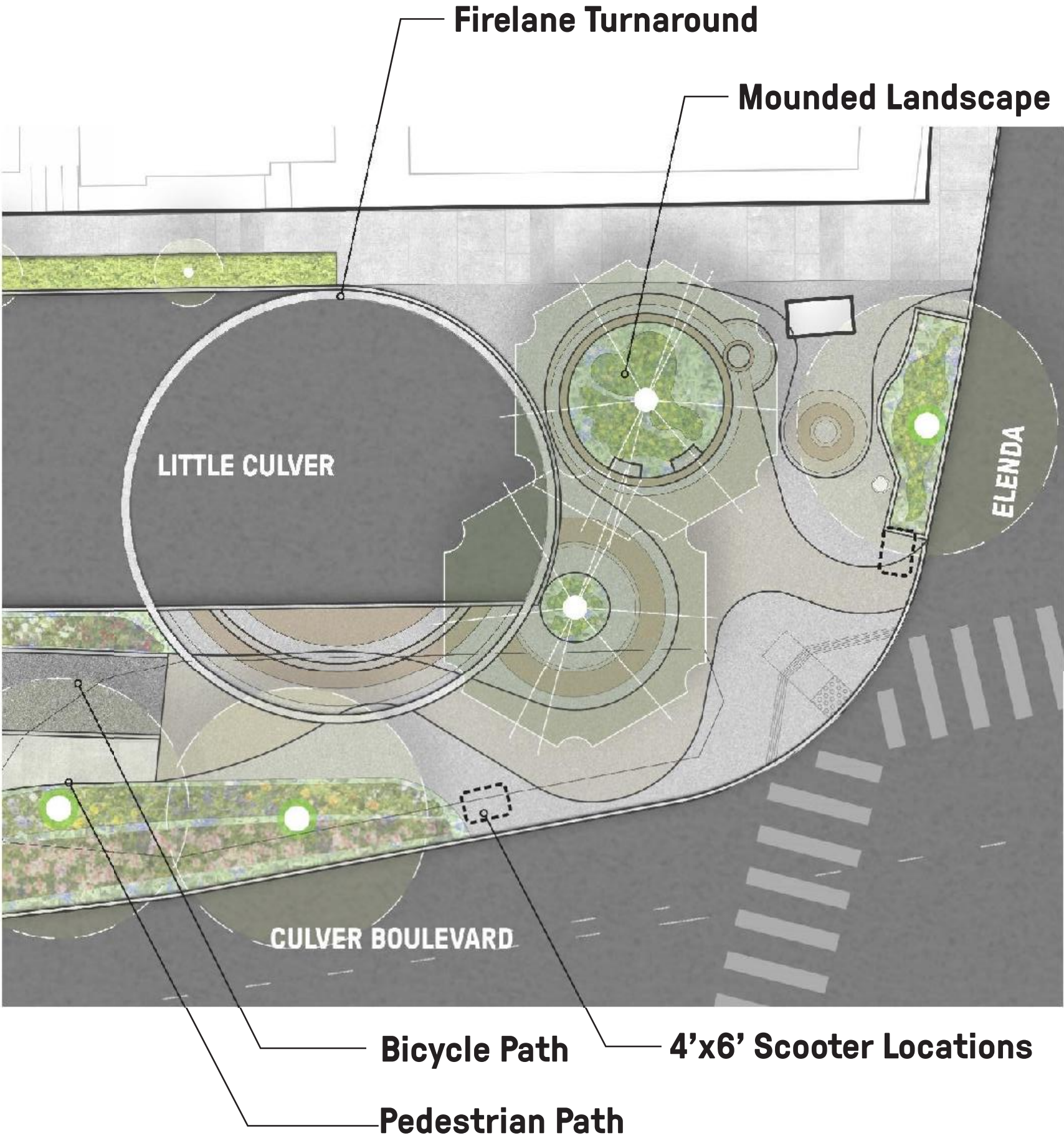


SECTION



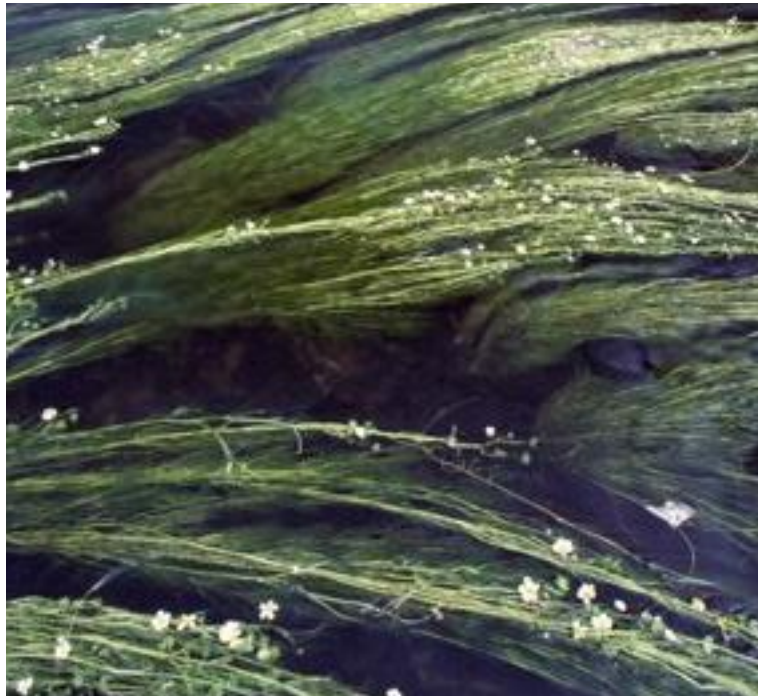
PLAN

Enlargement @ Elenda - Urban Connection

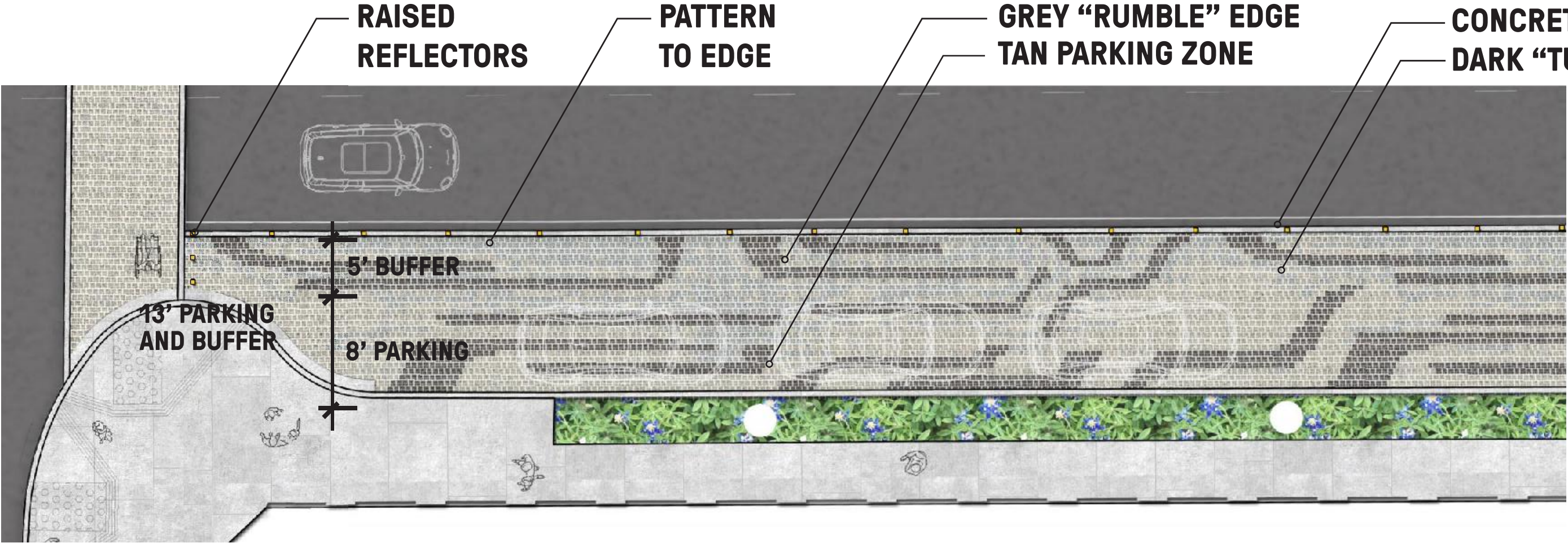




Culver Boulevard Buffer Paving

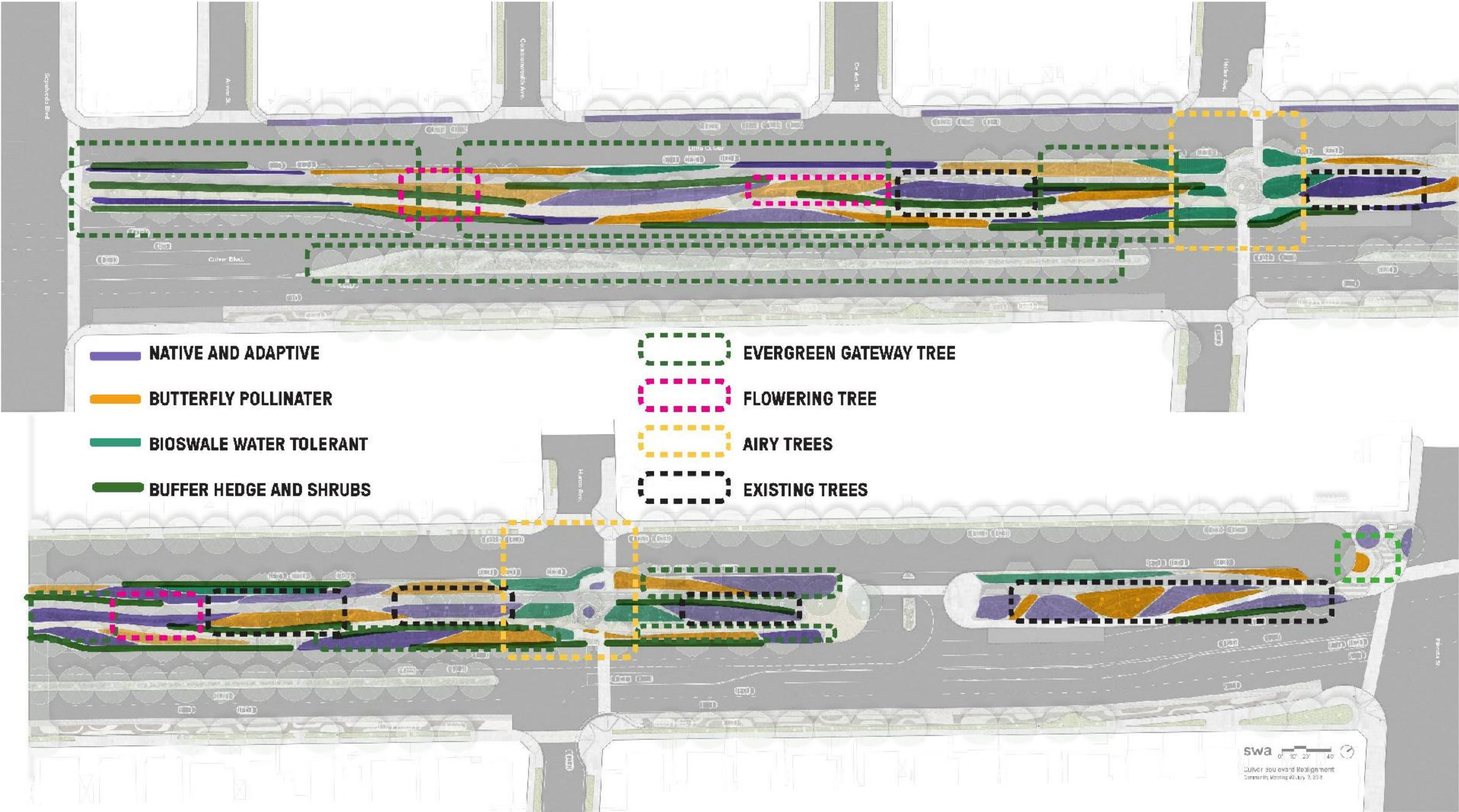


Flowing Water





CULVER BOULEVARD PRELIMINARY PLANTING



CULVER BOULEVARD REALIGNMENT PROJECT LANDSCAPE PRESENTATION

CULVER CITY COUNCIL PRESENTATION

JANUARY 28, 2019

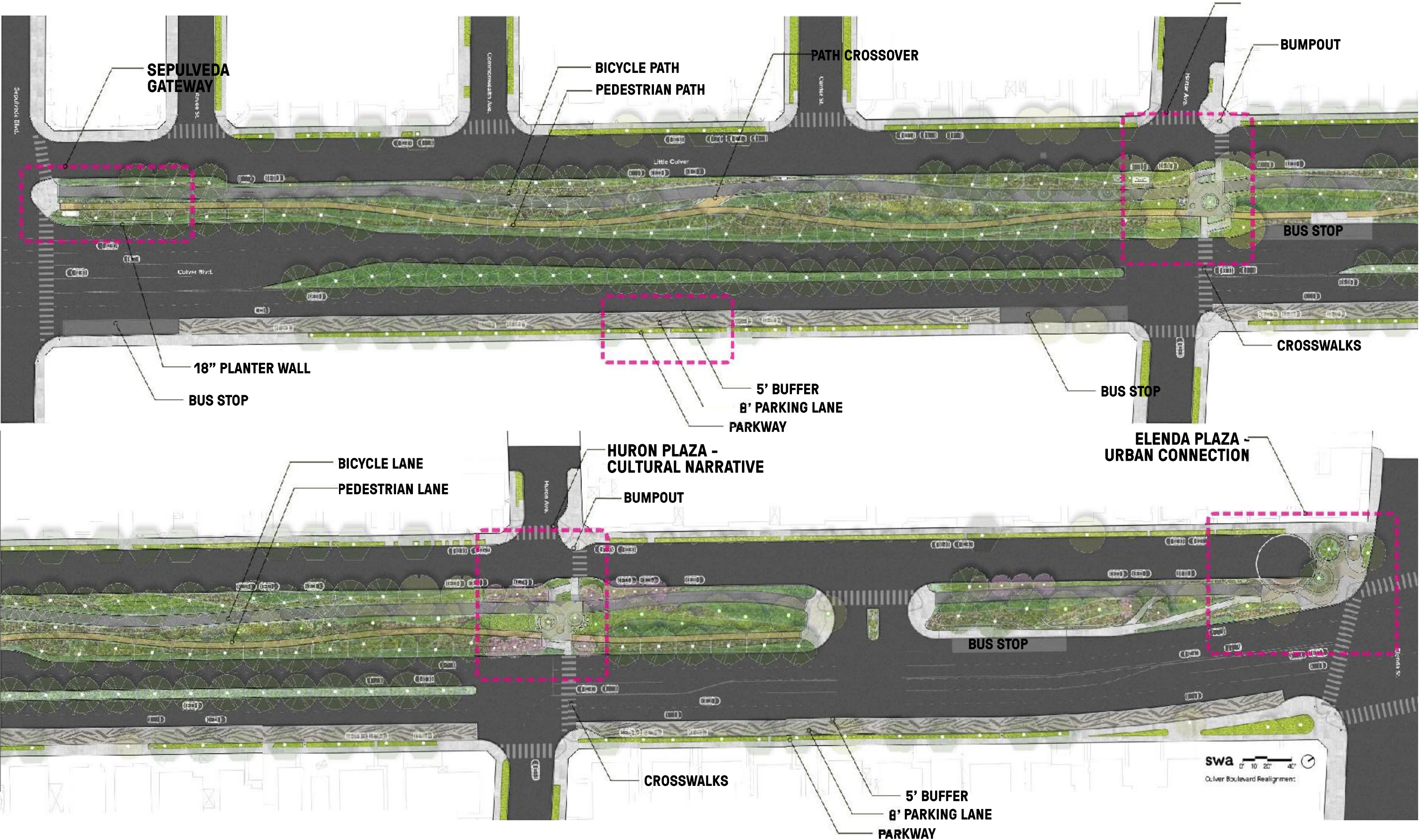
**Thank You to the Neighborhood, City Staff,
Citizen's Advisory Committee**

swa



TETRA TECH

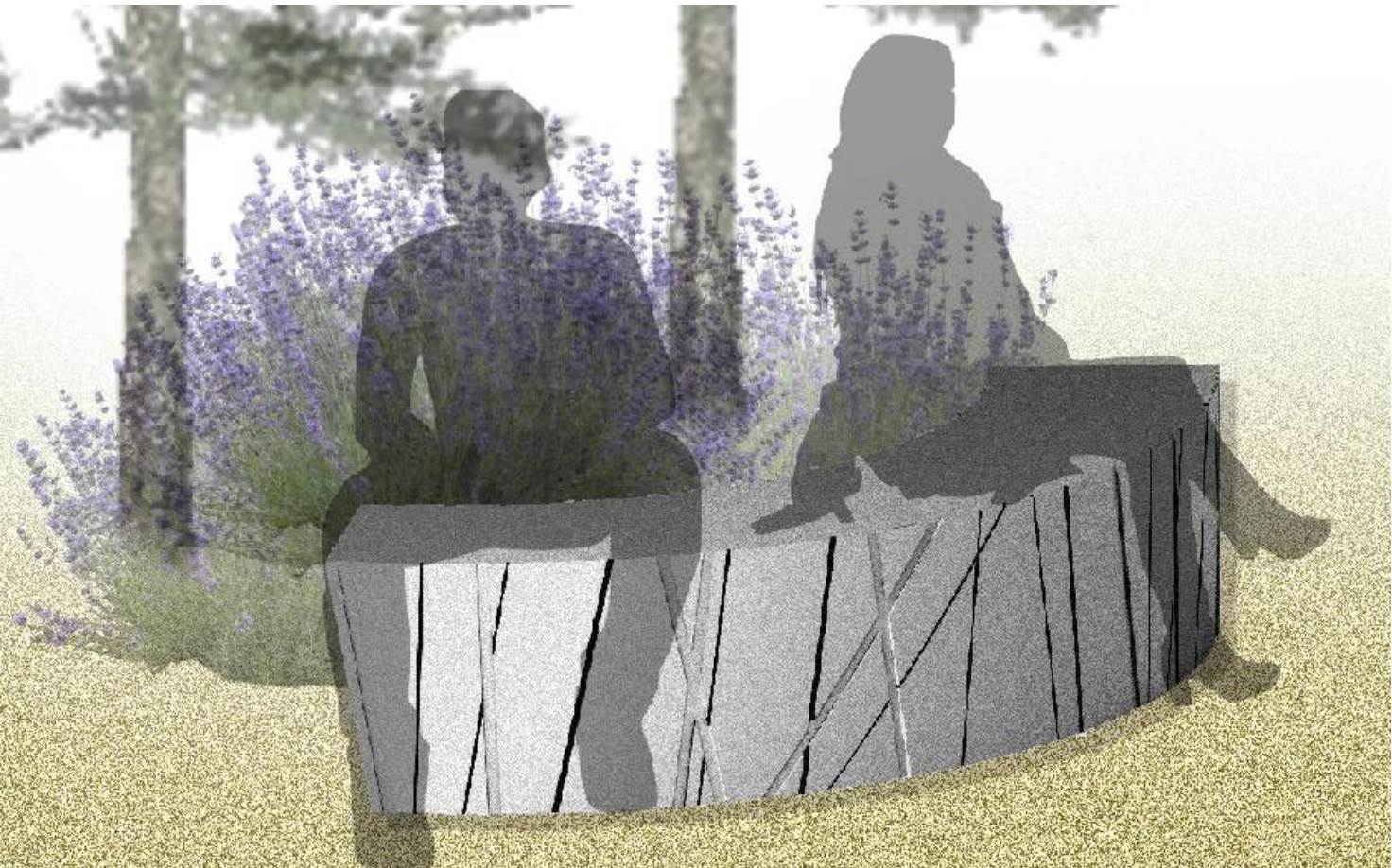
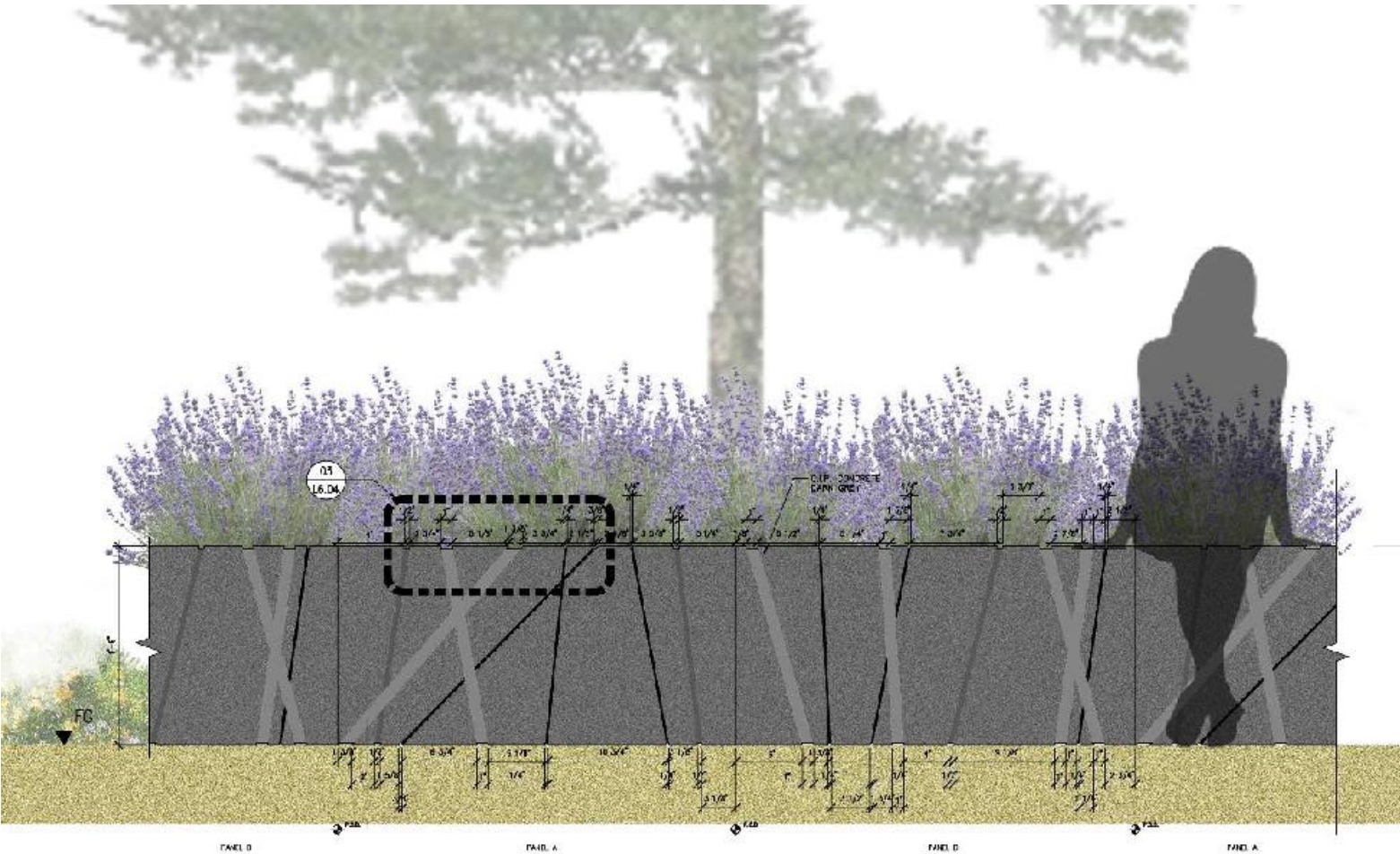
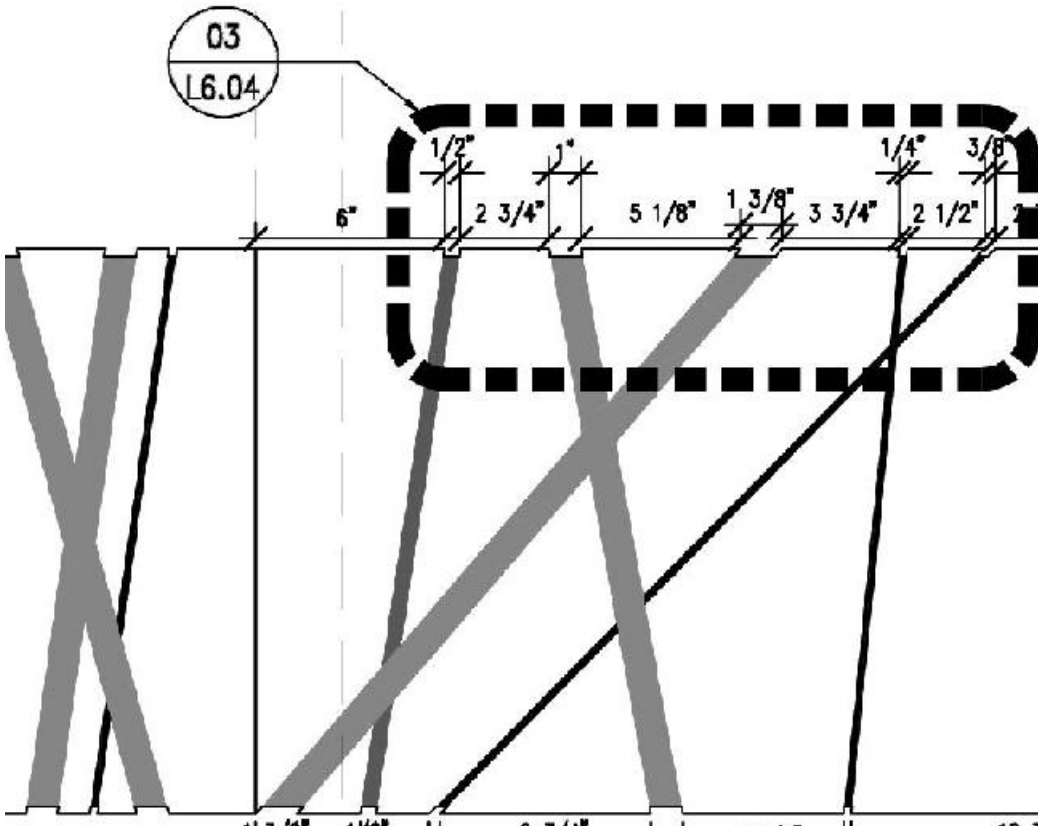
LANDSCAPE PLAN AND UPDATES



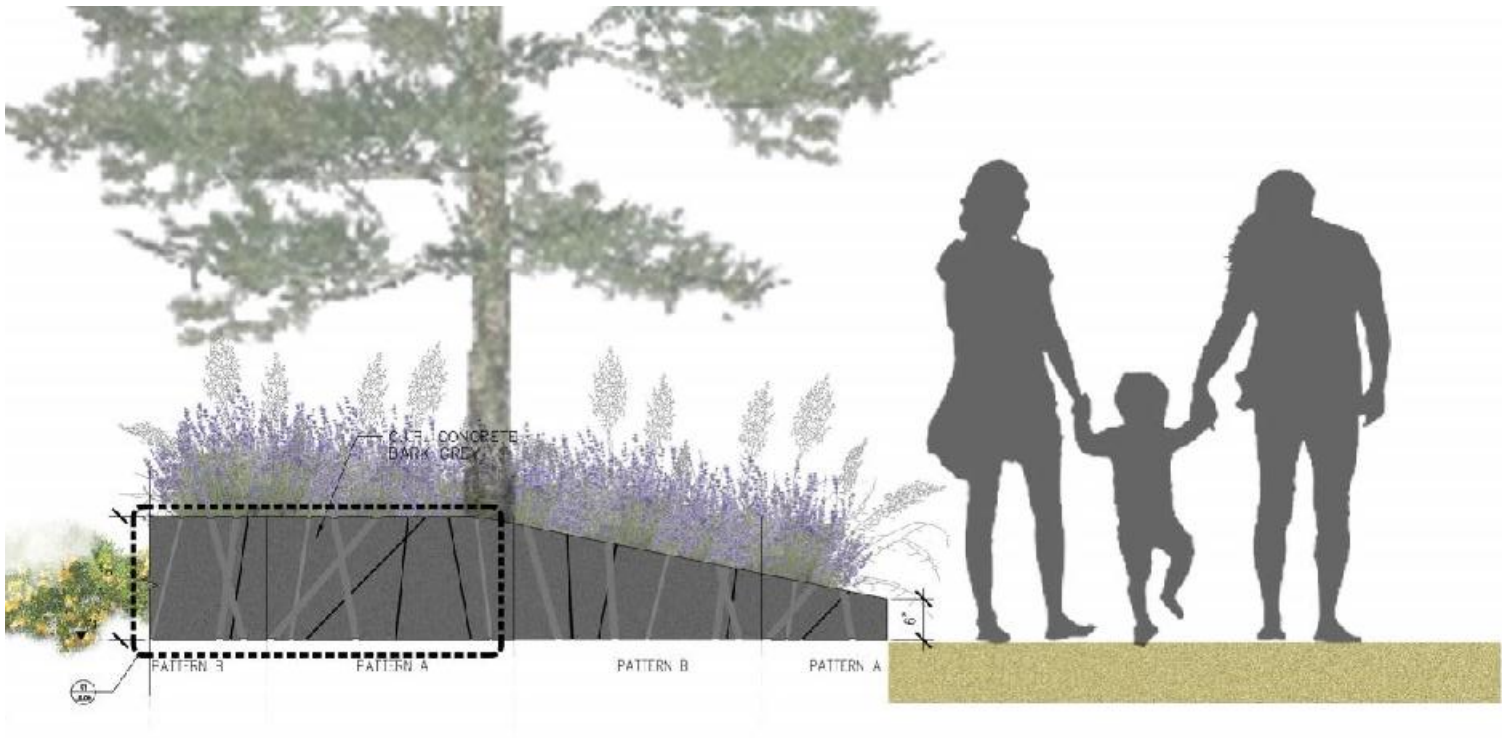
APPENDIX

Custom Concrete Benches and Walls

Tule Reed of Ballona Creek



Decorative Concrete Retaining Walls



GATEWAY TREES
EVERGREEN TREE



Pinus halepensis
Aleppo Pine

EVERGREEN TREE



Cedrus deodar
Deodar Cedar

BIOSWALE TREE



Platanus racemosa
Sycamore

STREET TREE



Geijera parviflora
Australian Willow

ACCENT TREES
FLOWERING TREE



Cercis occidentantalis
Western Redbud

AIRY TREE



Cercidium hybrid
Palo Verde Desert Museum

EXISTING TREES



Coral Tree



Canary Island Pine



Bottle Tree

CALIFORNIA NATIVES



CALIFORNIA NATIVE ANNUALS



Eschscholzia californica
California poppy



Cercidium hybrid
Palo verde desert museum

CALIFORNIA NATIVE SHRUBS FOR SUN



Epilobium canum
California fuchsia



Baccharis pilularis
Coyote brush



Asclepias eriocarpa
Indian milkweed

CALIFORNIA NATIVE SHRUB



Nepeta racemosa
Eastern cat-mint



Thymus vulgaris
'Argenteus'
Garden Thyme



Salvia leucophylla
Bee's Bliss Purple Sage

BUFFER / HARDY
SHRUBS & HEDGES



GROUND COVER



Baccharis pilularis
'Pigeon Point'
Dwarf Coyote brush



Lessingia filaginifolia
Silver carpet



Rosmarinus officinalis
Rosemary

SPREADING SHRUBS



Lantana camara
Big-sage, wild-sage, red-sage, white-sage, tickle-
berry



Ceanothus
California lilac



Mimulus aurantiacus
Sticky monkey-flower

BUTTERFLY GARDEN

CALIFORNIA NATIVES



NATIVE

CALIFORNIA NATIVES



Nassella pulchra
Purple needle grass



Penstemon spectabilis
Showy penstemon



Eriophyllum confertiflorum
Golden yarrow



Rhus integrifolia
Lemonade berry



Salvia leucophylla
Purple sage



Salvia apiana
White sage

FLOWERING TREE



Cercis occidentantalis
Western Redbud

BIOSWALE
GRASSES AND SHRUBS



UPRIGHT SHRUBS



Myrtus communis
Myrtle



Bouteloua gracilis
Blue grama



American sycamore
Platanus occidentalis

ADAPTIVE PLANTS



Dianella tasmanica
'Variegata'
Variegated Flax Lily

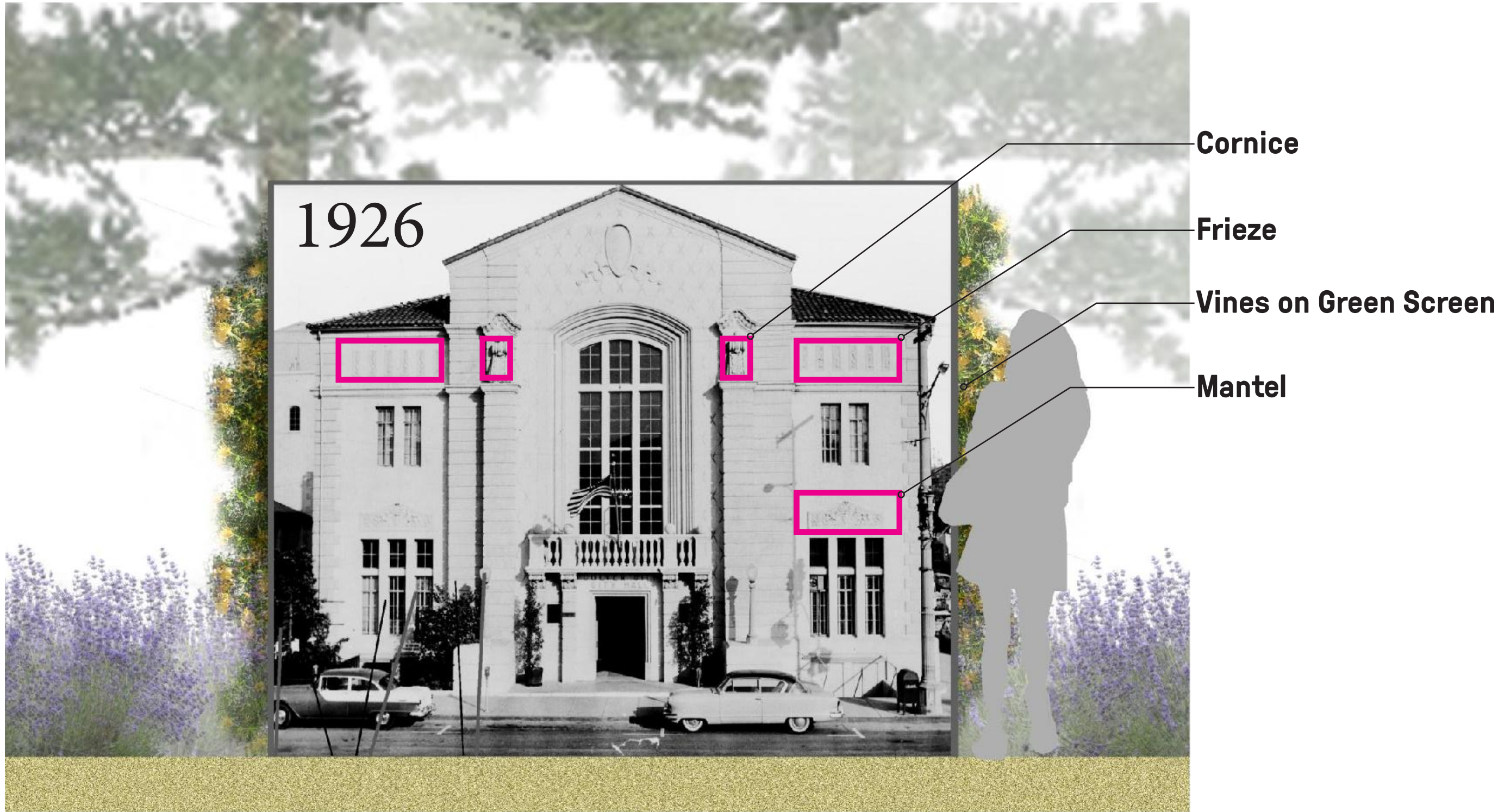


Scirpus hattorianus
Bullrush

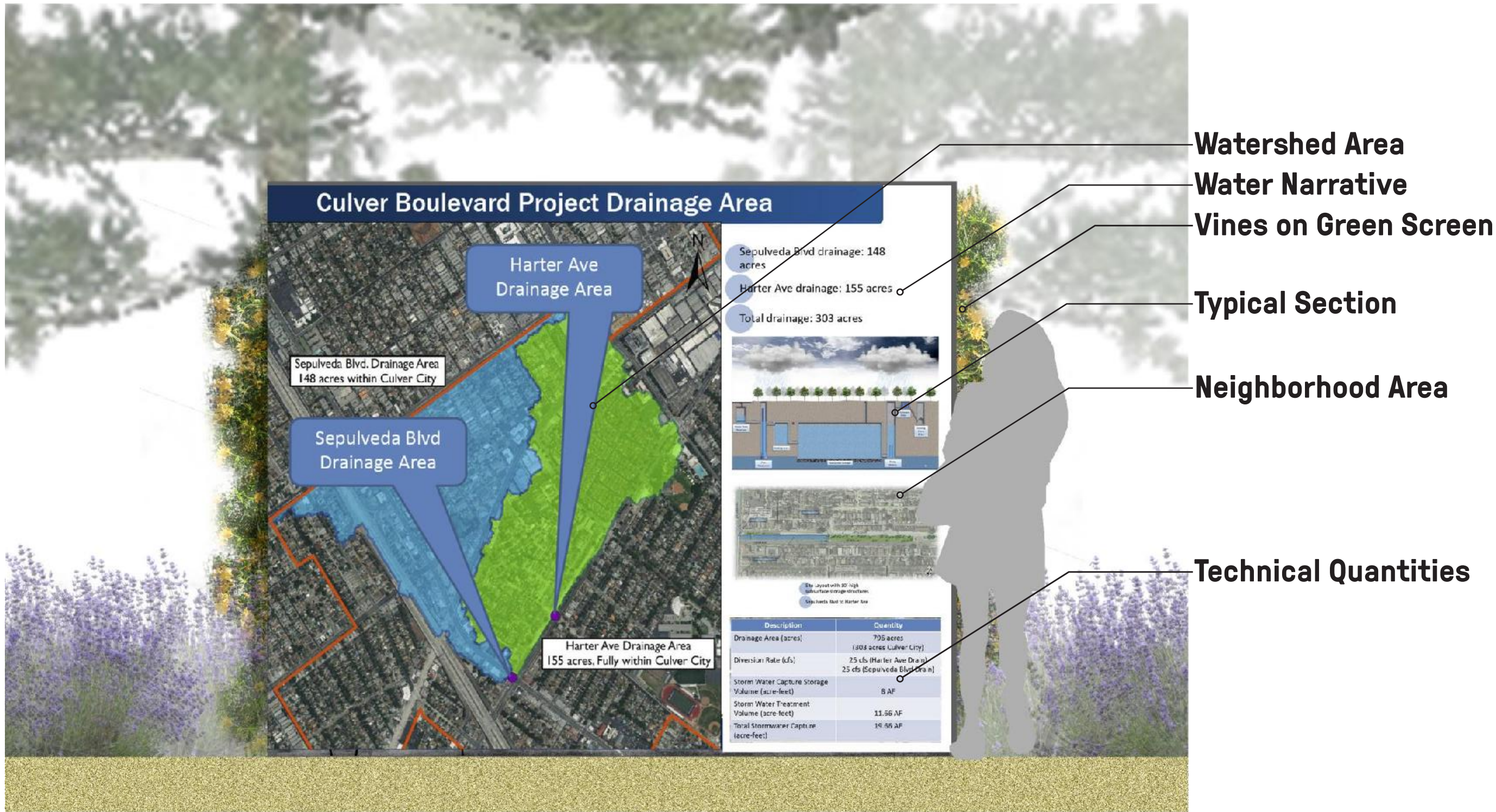


Liriope muscari
Big blue lilyturf

CULTURAL INTERPRETIVE SIGNAGE AT HARTER CONCEPT

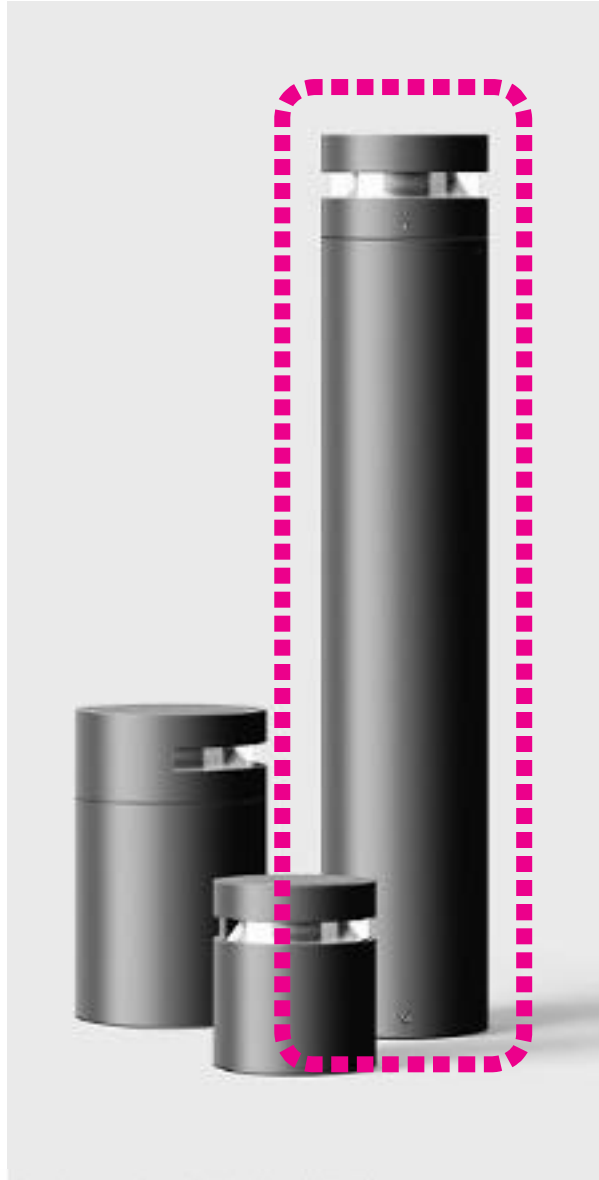


WATER INTERPRETIVE SIGNAGE AT HARTER CONCEPT





REUSE EXISTING DOG STATIONS



**LIGHTING AT PATHWAY
BEGA - LIGHTED BOLLARD**



**TRASH AND RECYCLING RECEPTACLE IN PLAZAS
LANDSCAPE FORMS - CHASE RECEPTACLE**



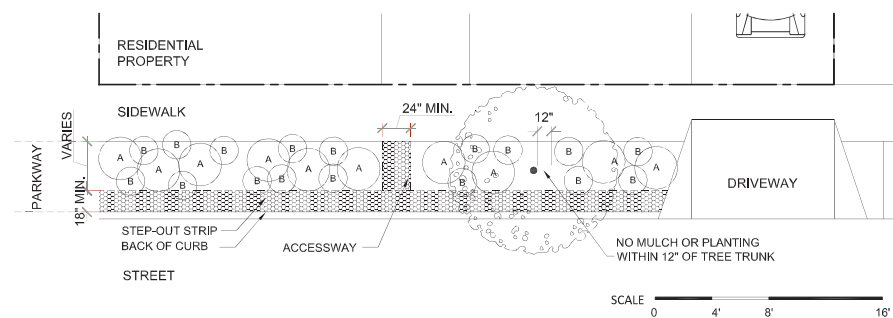
**CULVER CITY "HISTORIC" LIGHT POST
AMERON - DELHI POLE SINGLE ACORN HEAD**

Parkways - Culver City Residential Parkway Ordinance

What is a park way? “A parkway is defined as the portion of a public street right-of-way lying between the curb/street and sidewalk. It is sometimes referred to by other names such as sidewalk strip, parking strip, or tree buffer.”

2 TRIED-AND-TRUE CALIFORNIA NATIVES schematic designs and plant palettes

These plants are native to the state of California and have proven to be reliable in local gardens. By planting these plants in your parkway, you will be celebrating these native plants and helping to create a habitat for pollinators, butterflies, and birds.



20 | CULVER CITY RESIDENTIAL PARKWAY STANDARDS + GUIDELINES - DRAFT

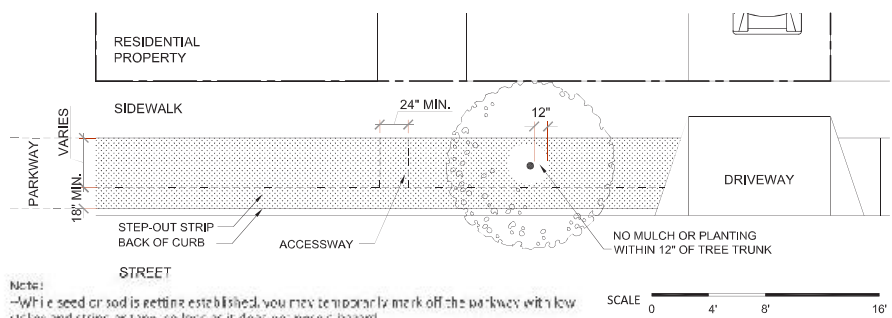
Tried and True California Natives

These plants are native to the state of California and have proven to be reliable in local gardens.



4 LOW-WATER LAWN / MEADOW schematic designs and plant palettes

This palette includes low-growing, walkable groundcovers that require significantly less water than traditional turf. As noted in the list on the facing page, some of these plants are very low (like *Dymondia monogynensis*) while others have more texture (like *Festuca* species). *Dymondia* requires no mowing. Mowing is optional for the others, also, some every 4-6 weeks, depending on the season. The palette includes some plants that are native to California, noted with an (N). Consult with the plant nursery for details on establishment and care. Note that the Step-Out Strip and Accessway can be planted with any of these species.



Notes:
-While seed or sod is getting established, you may temporarily mark off the parkway with low sticks and string or tape, so long as it does not pose a hazard.



24 | CULVER CITY RESIDENTIAL PARKWAY STANDARDS + GUIDELINES - DRAFT

Low Water Lawn / Meadow

This palette includes low-growing, walkable groundcovers that require significantly less water than traditional turf.



HARDSCAPE MATERIALS



**ACKERSTONE
CHESTNUT BROWN THROUGH MIX
6\"/>**



**ACKERSTONE
MESA BEIGE THROUGH MIX
6\"/>**



**ACKERSTONE
AGAVE THROUGH MIX
6\"/>**



COBBLESTONE PAVERS IN CONCRETE



CONCRETE BANDING