

MOVE *Culver* CITY



It's how we get there.

MOVE Culver City Update

Mobility, Traffic & Parking Subcommittee

08.29.2024

Culver CITY
Transportation Department

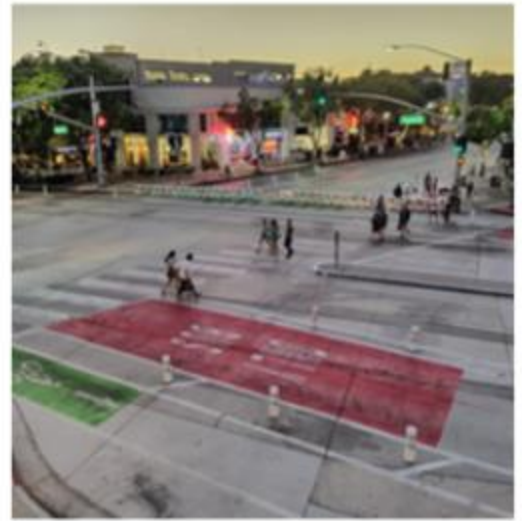
Mobility Planning • CityBus • CityShare • CityRide • CityFleet Services

Culver CITY

PUBLIC WORKS DEPARTMENT

Agenda

1. Background & Context
2. Project Summary
3. Barrier Treatments
4. Construction Update



Project Background

MOVE Culver City is an initiative to create mobility options for everyone.

- ▶ The Downtown Corridor pilot project – installed in November 2021.
 - ▶ Uses temporary materials to quickly and flexibly implement changes to inform future permanent design.
- ▶ In 2023, after a yearlong evaluation period, the City Council authorized modifications to the Downtown Corridor.

Rethinking
Mobility



Connecting
Community



Enhancing
Quality of Life



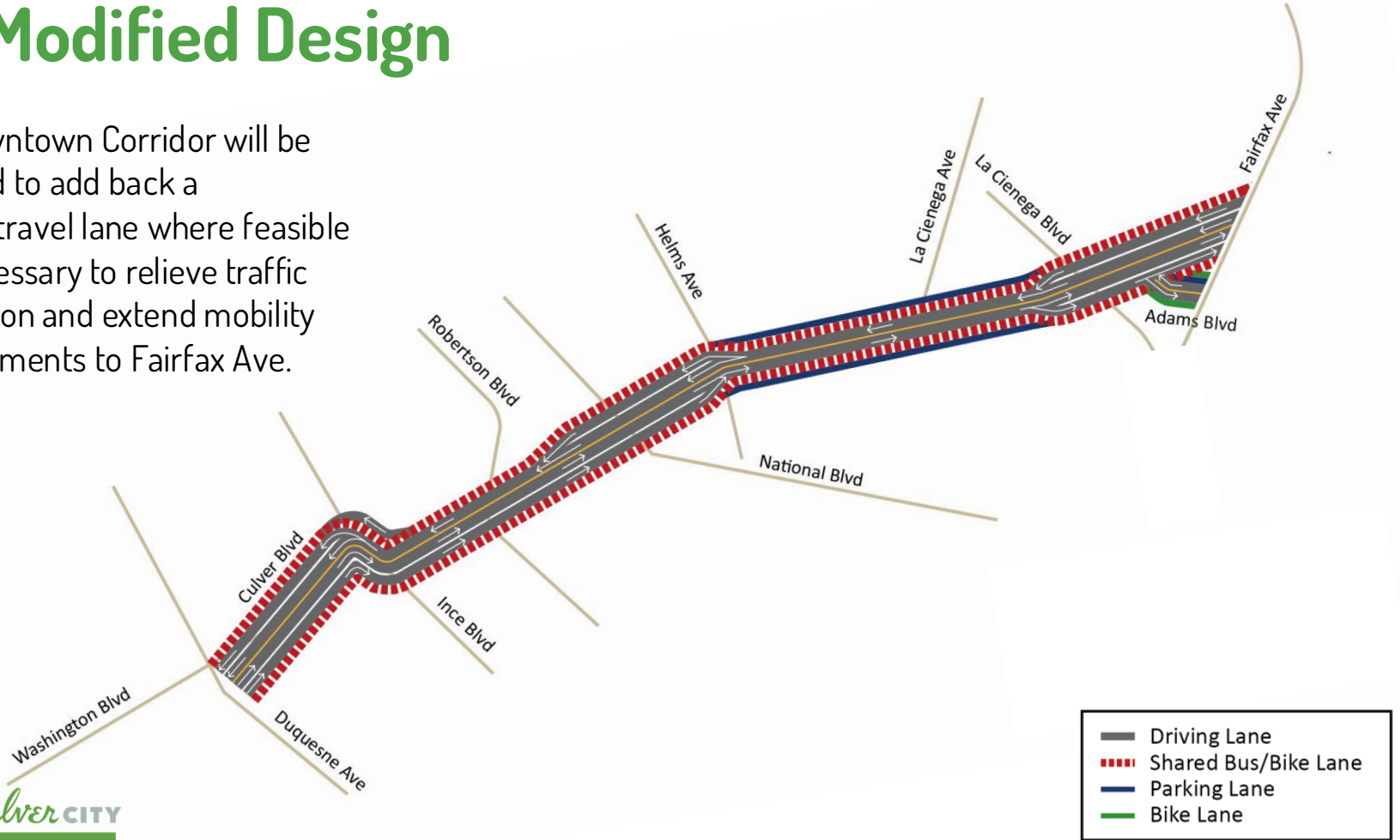
Context

- ▶ In October 2023, “Friends and Families for MOVE Culver City” filed a lawsuit challenging the legality of the City’s approved modifications and the project was temporarily put on hold.
- ▶ On Tuesday, August 13, 2024, the Court issued a Statement of Decision finding in favor of the City on all causes of action.
- ▶ The City is proceeding with construction as authorized by the City Council in September 2023.



The Modified Design

The Downtown Corridor will be modified to add back a general travel lane where feasible and necessary to relieve traffic congestion and extend mobility improvements to Fairfax Ave.

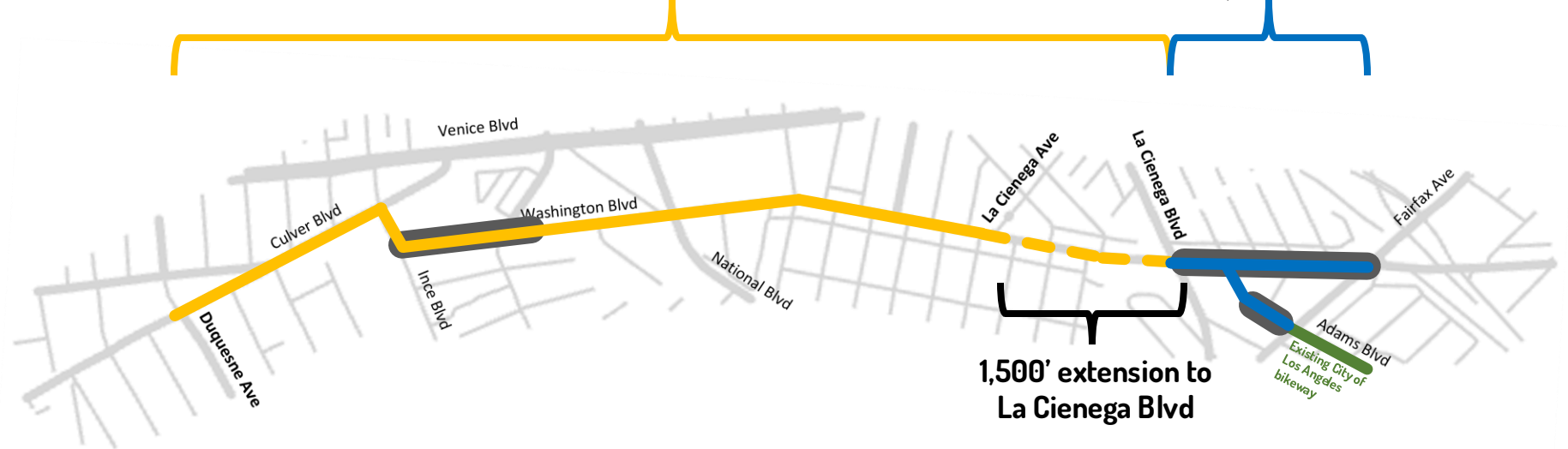


Construction Phasing

Western Segment

Eastern Segment

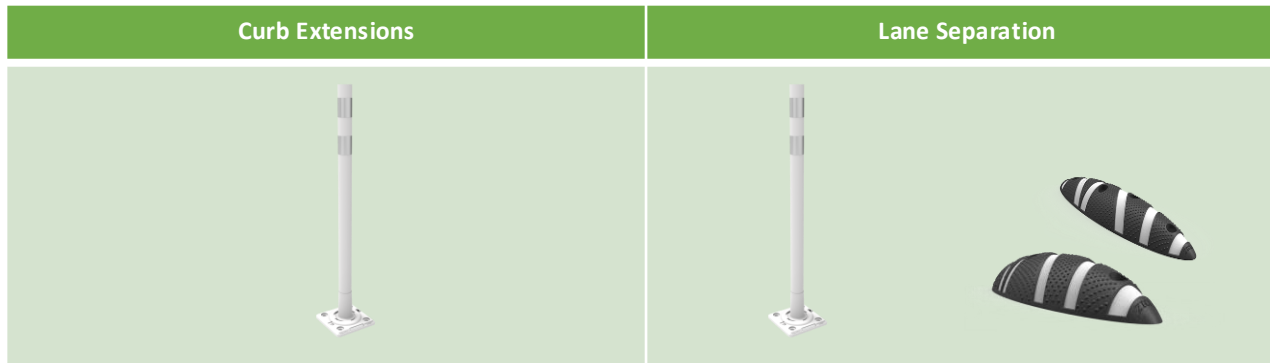
To be implemented in 2025



Modified Downtown Corridor Design

Barrier Treatment Materials

- ▶ Balancing between form and function.
- ▶ Lane Separation
 - ▶ Vertical Element: 28" Omega posts (8" shorter than current implementation) at 30-foot spacing
 - ▶ Horizontal elements: Zicla Zebra 9 ("armadillos") between Omega posts.
- ▶ Curb Extensions – 28" Omega posts at 5-foot spacing



Current: Tuff Curb XLP at 11-Foot Spacing (Downtown & Between National and Helms)



Modified Downtown Corridor Design Omega Posts at 30-Foot Spacing with Zebras

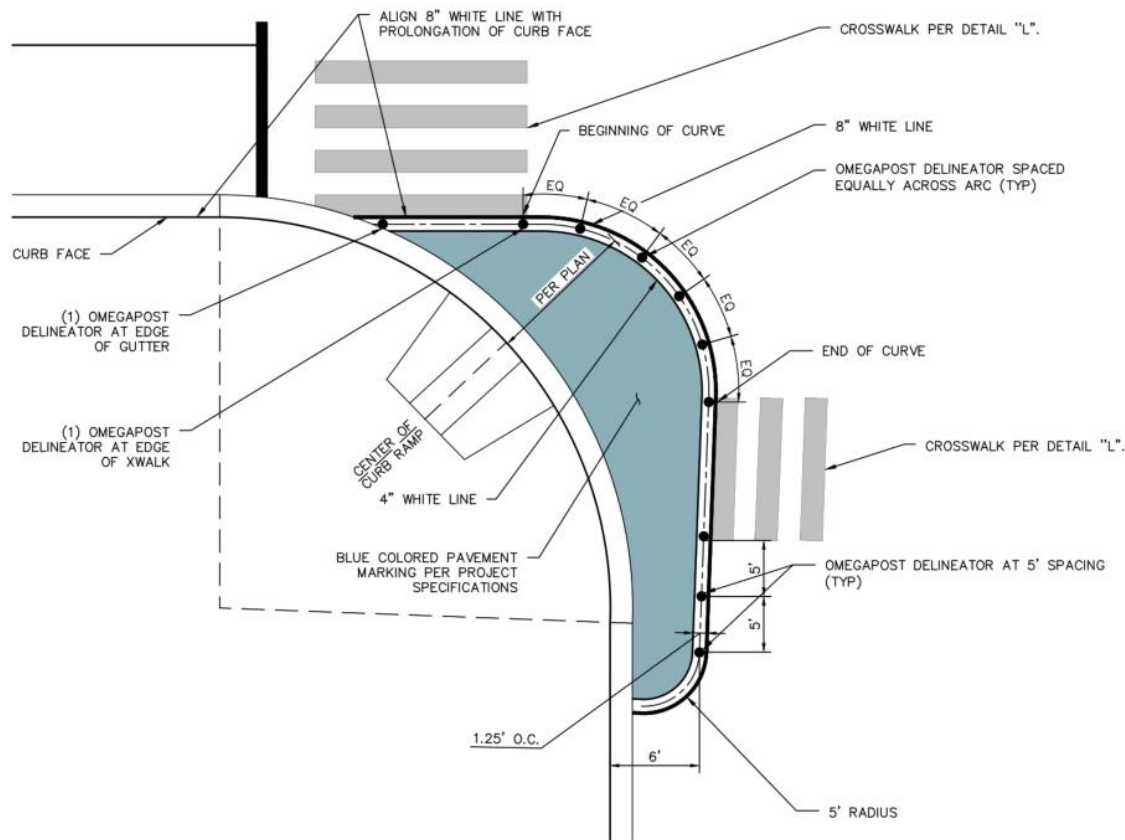
- Vertical elements every 30 feet (3-6x less dense than existing)
- Omega posts are 28 inches tall – 8 inches shorter than current vertical elements
- Zebras are designed to deflect impacts, unlike current vertical elements



Rendering for illustration purposes only.
Actual installation is per the design plans.

Modified Downtown Corridor Design

Curb Extensions: Omega Posts at 5-Foot Spacing with Breaks for Crosswalks



Construction Update

- ▶ Construction will commence in September 2024 and is expected to conclude in 2 to 3 months
- ▶ Outreach:
 - ▶ Walking and meeting with businesses and residents along the corridor
 - ▶ Weekly construction timeline updates
- ▶ Impacts:
 - ▶ Buses will detour onto Venice Blvd for the duration of construction
 - ▶ One lane of traffic in each direction will be maintained at all times
 - ▶ Businesses will remain open, and access will be maintained during normal business hours

Contact Us

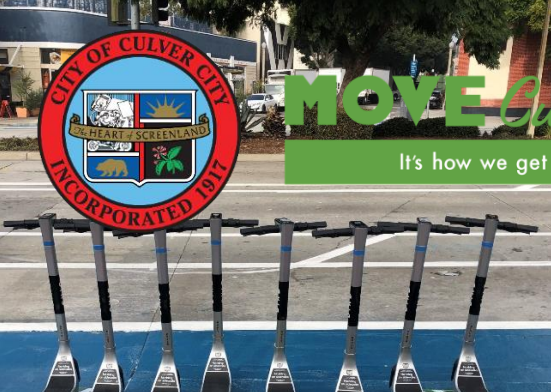
Construction Inquiries

- ▶ Thomas Check, City Construction Manager
Senior Traffic Engineer
(310) 253-5627
Thomas.Check@culvercity.org
- ▶ Bob Neiworth, Consultant Construction Manager
RTI Consulting
(310) 383-2613
Bob.Neiworth@rticm.com

General Project Inquiries

- ▶ [moveculvercity.com](https://www.moveculvercity.com)
- ▶ Contact Culver City: <https://www.culvercity.org/Contact-Us/Contact-Culver-City>
 - ▶ Use the “MOVE Culver City” topic under “Streets, Curbs, and Sidewalks”





MOVE *Culver*

It's how we get there.



Thank you

Mobility, Traffic & Parking Subcommittee

08.29.2024

